



 **norwex**<sup>®</sup>  
live cleaner, safer, better.<sup>™</sup>

## Start Your Norwex Journey

Share your passion for cleaner, safer,  
better living.

# welc

## Our Global Mission:

By reducing harmful chemicals in our everyday lives, we share a cleaner, safer way of living.

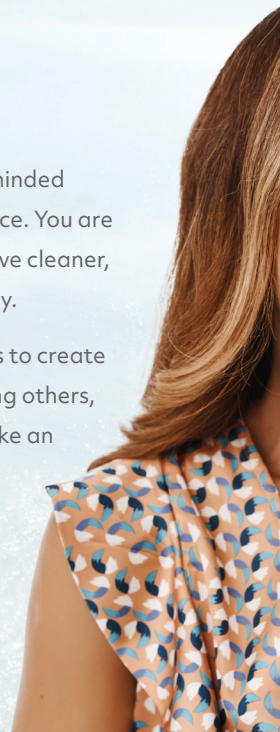
For our homes, our families and our planet.

**This mission is at the heart of everything we do — and it's what connects you to millions of households around the world.**



Congratulations on joining an inspiring community of like-minded individuals who are passionate about making a positive difference. You are now part of a global movement committed to helping families live cleaner, safer lives — and you're supported every step of the way.

As a Norwex Consultant, you've unlocked exciting opportunities to create lasting change. By sharing the Norwex Mission and empowering others, you can earn income, build a meaningful business, and make an impact that reaches far beyond today.



# elcome

Norwex is a  
great fit into  
any lifestyle



*let's do this*

## STEP 1: UNLEASH YOUR POTENTIAL!

In this guide, you'll find everything you need to start your Norwex journey with clarity and confidence.

The initial steps are the most important — they lay the foundation for your business, help you build momentum early, and set you up for long-term success.

By following each step in this guide, you will:

- Build confidence as you learn how your business works
- Set yourself up correctly from the very beginning
- Create strong habits that support consistent growth
- Connect with support, tools, and resources sooner
- Start sharing with ease, not overwhelm
- Unlock earning opportunities and rewards faster


Each step is designed to be simple, actionable, and achievable — even if you're brand new. Take it one step at a time, trust the process, and remember: progress comes from action.

### *Tip*

Use this guide to walk you through your first steps, then complete the checklist on page 7 to confirm you're ready to go and you have set yourself up for a confident, successful start.

# Discover the Norwex Consultant Office (NCO)





### Consultant Login

Enter your consultant ID and Password to login to your account.

Consultant ID

Password

[Forgot Password?](#)

## STEP 2: THE NORWEX CONSULTANT OFFICE (NCO) IS YOUR DEDICATED BUSINESS HUB.

Australia visit <https://nco.norwexbiz.com.au/>

New Zealand visit <https://nco.norwexbiz.nz/>

Here you can:

- Place personal, party, and customer orders
- Track your sales and business progress
- Access reports, tools, and essential information

To access your account, login using your **Consultant ID and password**. These can be found in your welcome email.

## STEP 3: SET UP YOUR ONLINE BUSINESS

Norwex Office Suite makes it easy to Share, Shop, and Earn — it really is that simple.

As a New Consultant, you'll receive:

- A FREE personalised website for your first six months\*
- Party referral links to share
- A seamless shopping experience for your customers
- Automated customer emails

Your customers can shop directly from your online store, and you'll earn an impressive **32% income on every sale**.

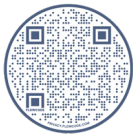
\*You will receive a 6 months free Office Suite trial when you sign up with Norwex. After 6 months you will have the option to continue a subscription at AU\$10.95/ NZ\$11.40 per month. To opt out, visit your Norwex Consultant Office (NCO) >> My Business >> My Profile >> Office Suite Preferences – untick under billing options and click save.

# connect

Stay connected



#### STEP 4: PLUG INTO COMMUNITY SUPPORT



Join our vibrant community on Facebook! The **Norwex ANZ Consultant Community** is an important space for all Consultants. This is where Home Office shares important updates and announcements, keeping you informed and in the know. It's an essential group to be part of so you stay informed, connected, and up to date.

#### STEP 5: EXPLORE THE RESOURCE



**Check out the Resource website** to help kick-start your Norwex journey with the latest monthly assets, business tools and resources; The Resource will be your go-to hub for everything you need to build and grow your business with confidence.

# Share

## STEP 6: LOVE THE PRODUCTS AND START SHARING

It's time to kickstart your business by sharing products you love with people you trust.

- Host an in-person or online launch party
- Share your personal experience with Norwex
- Begin earning income and receiving exciting rewards

Your launch helps you work toward your **New Consultant Rewards**, unlocking essential products that will support your business.

### WHY HOST A LAUNCH PARTY?

New Consultants who host a launch party within their first 30 days are three times more likely to succeed.

#### Tip

Connect with your Leader and schedule time to observe a party in action. This hands-on experience will give you valuable insights and ideas you can apply to your own launch.

After your launch, inviting others to host parties is a powerful way to expand your reach. Be sure to explore the **Host Rewards Program**—it's designed to reward Hosts while helping you maximise your business potential.

### SAMPLE SCRIPT TO HELP YOU ON YOUR WAY!

*Not sure what to say? Use this template to create your own impactful invite.*

I'm so excited! I just started my own Norwex business!

I joined Norwex because I fell in love with this new way to clean without harmful chemicals. What I love most is how much healthier it is for my family. The reason I'm excited to share this is I know you are going to love these products as much as I do.

*Close each conversation by inviting them to 'Join You at Your Launch Party':*

I hope you'll join me for my Launch Party to launch my business on \_\_\_\_\_. Can I count on you?

Great! I'll add you to my guest list. Bring a couple of friends, too! Thank you for your support—it means a lot to me. See you on \_\_\_\_\_.

*Be One of Your First Hosts:*

I'm asking a few of my friends and family and I thought of you first. It's super easy—would you consider inviting a few friends over so I can share Norwex in a quick 30-minute demo. How does that sound?

Great! I really appreciate you helping me. I have \_\_\_\_\_ or \_\_\_\_\_ dates available. Which is best for you? I'll get in touch and send everything you need.

## STEP 7: GROW YOUR CIRCLE OF INFLUENCE

Your connections are the driving force behind your success.

Family and friends help you:

- Boost personal sales
- Find new customers
- Discover potential Hosts
- Grow your team

Focus on building genuine relationships and creating meaningful connections — your circle of influence will naturally grow alongside your business.



# Create your F.R.A.N.K.I list

Scroll through your phone contacts and your social media friends. Remember everyone needs to clean and friends don't let friends use toxic products. Once you've built your list go through and draw a star next to who you think would host a party with you. Then go through your list and draw a ♥ next to those you think would like to be part of Norwex too.

<b>Friends</b> Besties, Friday night pizza friends, coffee friends, partners' friends.	<b>Relatives</b> Mum or dad, sister or brother, in-law's, cousins, aunts and uncles, partners' relatives.	<b>Acquaintances</b> Hairdresser, dog groomer, receptionist at GP, Chiro. People you see regularly but aren't part of your friends group.	<b>Neighbours</b> Either side and across the road. Neighbours from where you grew up. How about every house in your street?	<b>Kids</b> Mums or dads groups, kindy mums or dads, parents from school, swimming, netball, soccer, football.	<b>Internet</b> Different pages you're on. People you have met through common interests.

**FRANKI stands for:** Friends, Relatives, Acquaintances, Neighbours, Kids and the Internet



## How you can share

Now that your kit has arrived, it's time to unbox and discover! Share the excitement of unboxing your new products on your social platforms and let your community experience the journey with you.

### Gotta have some face to face!

### Love the online world!

In-home, coffee shops or on the go—lots of ways to meet in person!

Like a virtual living room—connect, chat and see others the entire time.

Small and intimate express party. Party guests will see everything!

Popular online platform, so this could be the “easy button” to fit your style.



**In-Person**



**Zoom**



**Messenger**



**Facebook**



#### **Tip**

After each party, continue to build relationships with your customers. This helps them stay connected to you for shopping and having their own event. Plus, some of your new team members will come from this group.



## STEP 8: TIME TO GROW AND MAKE A BIGGER IMPACT

Expand your impact by inviting others to join Norwex as Consultants.

- Share what excited you about starting your business
- Inspire others to explore the opportunity
- Remember: you don't need all the answers — just start the conversation

As your team grows, you'll help spread our mission of creating a cleaner, safer world by reducing chemicals in everyday life.

Reach out to your Leader for guidance as you share this opportunity and support others on their own journeys.



### Check out our amazing New Consultant Rewards

Look at what you can earn in your first 90 days as a New Consultant simply by sharing the benefits of Norwex products and introducing New Consultants into our community.



## STEP 9: CONNECT WITH THE PERSON WHO INVITED YOU

Stay connected to ensure you're booked into upcoming meetings and trainings. Norwex events and team meetings are a fantastic opportunity to connect, exchange ideas, learn new strategies, and celebrate successes. These experiences help you stay informed, motivated, and strongly connected to your Norwex community.

**Our Consultant Care Team is here for you, feel free to reach out**

Monday – Friday 8:30am to 5:00pm AEST

Australia 07 3204 9444 | New Zealand 0800 895 015

grow

## STEP 10: HAVE FUN

Remember, authenticity is key—just be yourself and let your unique personality and style shine! People are drawn to genuine connections, and having fun is a huge part of that. When you're passionate about what you do, it will naturally inspire others and create a ripple effect of excitement and success.



# Checklist

Use this checklist as a quick reference and summary:

- I understand the Norwex Mission and my reason for joining
- I'm set up to share and invite on social platforms
- I've invited friends and family to support my Launch Party
- I've logged into the Norwex Consultant Office (NCO)
- My personalised website is live and ready to share
- I've explored The Resource website
- I've joined the Norwex ANZ Consultant Community on Facebook
- I've hosted my launch party
- I've connected with the person who invited me for support
- I've started sharing products and my story

# You've got this!

This is just the beginning. Stay connected, stay consistent, and stay true to why you started. Cleaner. Safer. Better. For today — and for generations to come.

**People like you are making an impact.  
Thanks for sharing our mission with others!**

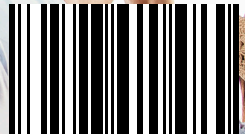


Norwex Australia Pty Limited:

Ph: 07 3204 9444 | Web: [www.norwex.com.au](http://www.norwex.com.au) | ABN: 85 129 561 262

Norwex New Zealand Limited:

Ph: 0800 895 015 | Web: [www.norwex.nz](http://www.norwex.nz) | NZ GST #: 116 489 619



S9218